

# Gallery Guide

Columbia, Missouri



## PICTURE THIS!

A guide to museums, galleries and  
visual art opportunities in Columbia, Missouri

City of Columbia · Convention & Visitors Bureau · Office of Cultural Affairs

# Picture This!

gallery crawl .....	4
galleries	
downtown in the District.....	5
elsewhere in Columbia .....	9
on college campuses.....	10
corporate collections of note .....	13
in neighboring communities.....	14
art while you eat .....	15
murals of note .....	16
public art.....	17
art on the Web.....	17
coming soon .....	18

## CONTENTS

THIS GUIDE WAS COMPILED by the City of Columbia Office of Cultural Affairs (OCA) in collaboration with Columbia's Convention and Visitors Bureau (CVB). Funding was provided by the OCA, CVB and the Missouri Arts Council, a state agency.



The City of Columbia  
Office of Cultural Affairs



MISSOURI ARTS COUNCIL

## **COLUMBIA HAS NO SHORTAGE OF VISUAL ART OPPORTUNITIES.**

With a variety of galleries and museums, residents and visitors alike will find plenty to see and much to buy. Expect to see an array of art at the galleries and museums listed in this guide—painting, photography, ceramics, fiber, sculpture, jewelry, glass, metal and more—made by local and regional artists, as well as those from around the nation and the world. Retail galleries sell the works displayed while museums do not, though museums often have gift shops on site with unique arts-oriented items for sale. Offerings at all locations change regularly, so visit often. When you do, think about what’s on your walls at home and at work. Displaying original art gives a space character and distinguishes it in a way that other items cannot.

A great effort has been made to ensure the accuracy of the information included in this guide. Used as a reference, it can enhance your enjoyment of Columbia; however, the guide is not a comprehensive inventory. Operating hours for the locations listed in the guide were current as of the date of publication. Visitors are encouraged to call ahead to confirm. The city has planned future revisions of the guide to include any new locations.

### **FOR MORE INFORMATION**

about art in Columbia, go to [www.ColumbiaGalleries.com](http://www.ColumbiaGalleries.com) or contact the city’s Office of Cultural Affairs (OCA) (573) 874-6386, [oca@GoColumbiaMo.com](mailto:oca@GoColumbiaMo.com) or [www.GoColumbiaMo.com](http://www.GoColumbiaMo.com) (GoWord: GoArts).

Cover images reprinted by permission from  
Bluestem Missouri Crafts,  
Museum of Art and Archaeology,  
Poppy and PS:Gallery.



Photo reprinted by permission from The District.

Columbia's retail galleries have something for everyone, from jewelry and framed paintings to functional dishes, holiday decorations and gifts.

## downtown gallery crawl



**HELD ANNUALLY IN MAY,** Columbia's Gallery Crawl is a collaboration between the city's Office of Cultural Affairs and the Columbia Special Business District. The event highlights art-related businesses in the downtown area with special openings, exhibits, meet-and-greets with artists, open studios, live music, great food and wine tastings. The event is free.

**For more information,**  
go to [www.DiscoverTheDistrict.com](http://www.DiscoverTheDistrict.com)  
or contact The District office at (573) 442-6816 or  
[info@discoverthedistrict.com](mailto:info@discoverthedistrict.com).

# **galleries**



*downtown in  
The District...*



Image reprinted by permission from à la campagne.

Have an empty spot on your wall? Fill it with original art from one of the many retail galleries in Columbia.

## **à la campagne**

918 E. Broadway, (573) 815-9464  
hours: Mon.–Sat., 10 a.m. to 6 p.m.

The upstairs gallery at à la campagne is dedicated to exhibiting two- and three-dimensional works of art. Rotating shows feature the art of Missouri artists.

## **The Arsenic Leopard**

101 E. Walnut, (573) 443-4555  
e-mail: [arsenicleopard@mailcan.com](mailto:arsenicleopard@mailcan.com)  
hours: Tues.–Sat., 11 a.m. to 5 p.m.

A variety store of local and global arts and crafts, the Arsenic Leopard features a mix of “arty objects” including local ceramics, photographs, paintings, mixed media works, jewelry, accessories, local and world music.



Photo reprinted by permission from Bluestem Missouri Crafts.

For many years, Bluestem Missouri Crafts has been nationally noted for the high quality and uniqueness of the art it carries, including recognition as the “Top Retailer of American Craft” in 2005.

## **Bluestem Missouri Crafts**

13 S. Ninth Street, (573) 442-0211

e-mail: [customers@bluestemmissouricrafts.com](mailto:customers@bluestemmissouricrafts.com)

website: [www.bluestemmissouricrafts.com](http://www.bluestemmissouricrafts.com)

hours: Mon.–Fri., 10 a.m. to 6 p.m.; Thurs. 10 a.m. to 8:30 p.m.;  
Sat. 10 a.m. to 6 p.m.; Sun. noon to 5 p.m.

Bluestem Missouri Crafts, a partnership of artists, has been honored as one of the nation’s top retailers of American crafts. Bluestem’s three-room gallery features the work of more than 300 artists and craftspeople from Missouri and its eight neighboring states, including traditional and contemporary clay, glass, wood, metal, and fiber works. Bluestem offers distinctive gift wrapping, information cards about each artist, shipping via UPS and a knowledgeable sales staff ready to assist.

## Columbia Art League (CAL)

111 S. Ninth Street, Suite 140, (573) 443-8838

e-mail: [artleague@socket.net](mailto:artleague@socket.net)

website: [www.cal.missouri.org](http://www.cal.missouri.org)

hours: Tues.–Sat., 10 a.m. to 4 p.m. with extended hours in December.

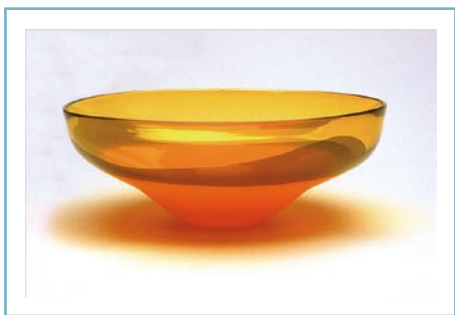
Located in the historic City Centre building on Ninth Street, CAL showcases the work of professional, nonprofessional and nationally acclaimed artists in their sales gallery. CAL offers a variety of classes for children and adults throughout the year and hosts the annual Art in the Park festival the first weekend of June.

## Missouri Art Gallery

9 N. Tenth Street, (573) 443-5010

hours: Mon., Tues., Thurs., Fri., 11 a.m. to 4 p.m.; Sat., 11 a.m. to 2 p.m.; closed Wed. & Sun.

The Missouri Art Gallery features large collections of limited edition prints and originals, sculptures, carvings and collectibles by national and international award-winning artists. Custom framing services are available.



Pick from unique jewelry, whimsical wall art, inspired sculpture and creative art cards at Poppy.

Photo reprinted by permission from Poppy and Boar Glass.

## Poppy

corner of Tenth and Broadway, (573) 442-3223

e-mail: [contact@poppy.biz](mailto:contact@poppy.biz)

website: [www.poppy.biz](http://www.poppy.biz)

hours: Mon.–Sat., 10 a.m. to 6 p.m.; Sun., noon to 5 p.m.

Poppy specializes in the art of contemporary American craft, folk art and fine art including clay, fiber, metal, wood, glass and jewelry. In business since 1983, Poppy represents artists from throughout the United States, including many local artisans, and has been named one of the top 100 galleries for contemporary craft in the country.

*“The object of art is to give life a shape”*

—Jean Anouilh, dramatist





Image reprinted by permission from PS:Gallery and Patty Oblack.

What's on your walls? Displaying original art gives a space character and distinguishes it in a way that other items cannot. *Blaze II*, Patty Oblack, 2005, acrylic on panel.

## **PS:Gallery**

812 E. Broadway, (573) 442-4831

e-mail: [art@perlow-stevensgallery.com](mailto:art@perlow-stevensgallery.com)

website: [www.perlow-stevensgallery.com](http://www.perlow-stevensgallery.com)

hours: Tues.–Sat., 10 a.m. to 6 p.m.; Sun., noon to 5 p.m.

PS:Gallery, Columbia's newest art gallery, is for browsing, buying or being inspired. PS:Gallery features rotating exhibits of works by local, regional and national artists including painting, sculpture, glass, ceramics, jewelry and fiber arts. Other services available include fine art appraisal, art consultation, nationwide shipping and commissioned art. The gallery can be booked for special events.

### *While you're downtown...*

enjoy a self-guided walking tour of architecture and history in The District using the Historic Downtown Walk brochure. The guide details more than 50 locations, including the site at which renowned painter George Caleb Bingham once maintained his studio, just east of City Hall in the Daniel Boone Building, 701 E. Broadway. Print a copy of the brochure by accessing The District's website: [www.DiscoverTheDistrict.com](http://www.DiscoverTheDistrict.com)



## *elsewhere in Columbia...*

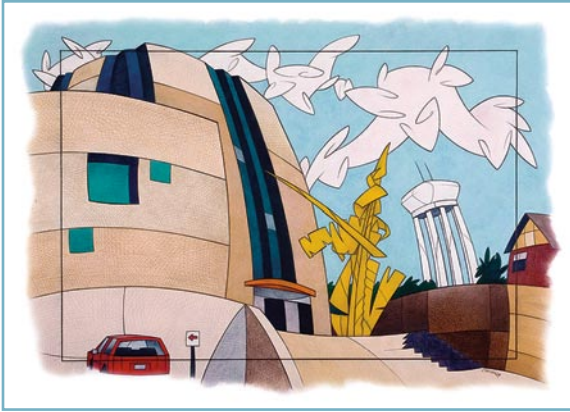


Image reprinted by permission from Kelly Coalier.

Paintings, drawings, prints, photography and mixed media works are exhibited all year at Orchids and Art. *Columbia Library*, Kelly Coalier, 2004, watercolor pencil.

### **Orchids and Art**

10 W. Nifong Boulevard, Suite B, (573) 875-5989

e-mail: [kellycoalier@aol.com](mailto:kellycoalier@aol.com)

website: [www.kellycoalier.com](http://www.kellycoalier.com)

hours: Mon.–Fri., 10 a.m. to 6 p.m.; Sat. 10 a.m. to 5 p.m.

Located on Columbia's growing south side, Orchids and Art features rotating shows of work by local and regional artists. Live orchid plants complement an eclectic mix of paintings, drawings, photographs and pottery. Custom framing services are also available.

### **The Montminy Gallery**

3801 Ponderosa Avenue, (573) 443-8936

e-mail: [bchs@socket.net](mailto:bchs@socket.net)

website: [members.socket.net/~bchs/index.htm](http://members.socket.net/~bchs/index.htm)

hours: summer (Apr.–Oct.) Tues.–Fri., noon to 4 p.m.; Sat. & Sun., 1 to 5 p.m.; winter (Nov.–March) Wed. & Fri., noon to 4 p.m.; Sat. & Sun., 1 to 5 p.m.

The Montminy Gallery is devoted to providing a venue for the exhibition and sale of regional artists' work. The gallery hosts approximately 12 exhibits a year and is operated by the Boone County Historical Society. Other exhibit space on site features historical exhibits.



## *on college campuses*

### **University of Missouri—Columbia: Brady Gallery**

203 Brady Commons, (573) 882-2889

website: [www.stulifeweb.com/craftstudiop/gallery.php](http://www.stulifeweb.com/craftstudiop/gallery.php)

hours: generally Mon.–Fri., 9 a.m. to 5 p.m. (varies in the summer); some Sat. hours when MU is session.

Located on the second floor of MU's Brady Commons, the gallery exhibits individual and group shows and features many of the state's most talented professional, faculty and student artists working in a wide variety of art forms.

### **George Caleb Bingham Gallery**

A126, Fine Arts Center, (573) 882-3555

e-mail: [binghamgallery@missouri.edu](mailto:binghamgallery@missouri.edu)

hours: Mon.–Fri., 8 a.m. to 5 p.m.

The Bingham Gallery exhibits works done in a wide variety of media, exploring a range of artistic visions. Works by contemporary working artists provide the Columbia community and the MU campus a glimpse into new directions in art. MU faculty and student work is featured annually.

### **Museum of Anthropology**

Swallow Hall, (573) 882-3573

e-mail: [anthromuseum@missouri.edu](mailto:anthromuseum@missouri.edu)

website: [www.anthromuseum.missouri.edu](http://www.anthromuseum.missouri.edu)

hours: Mon.–Fri., 9 a.m. to 4 p.m.

Since its founding in 1939, the Museum of Anthropology has served the research and teaching needs of the university as an archaeological curatorial facility. The permanent gallery focuses on Native American cultures and Missouri history from 11,200 years ago to the present.

*“...art makes life worth living....It brings life to life.”*

—John Sloan, artist



Photo reprinted by permission from the Museum of Art and Archaeology.

With regularly changing exhibitions and selections from the permanent collection, the Museum of Art and Archaeology always offers something new. While visiting, shop for unique gifts and specialty items at the Museum Store.

## **Museum of Art and Archaeology**

Pickard Hall, (573) 882-3591

e-mail: [museumuser@missouri.edu](mailto:museumuser@missouri.edu)

website: [maa.missouri.edu](http://maa.missouri.edu)

hours: Tues.–Fri., 9 a.m. to 4 p.m.; Sat. & Sun., noon to 4 p.m.;  
closed Mon. and all university holidays.

The Museum of Art and Archaeology is the third largest art museum in Missouri, housing more than 14,000 objects. Collections include ancient art, Byzantine and medieval art, European and American art, modern and contemporary art, African art and non-Western art. The museum also features a variety of temporary exhibitions. Of interest is the Cast Gallery, a collection of plaster casts from original Greek and Roman sculptures. Admission is free. Docent-led group tours can be arranged two weeks in advance.

## **The State Historical Society of Missouri**

1020 Lowry Mall, (573) 882-7083

e-mail: [shsofmo@umsystem.edu](mailto:shsofmo@umsystem.edu)

website: [www.umsystem.edu](http://www.umsystem.edu)

hours: Mon.–Fri., 8:30 a.m. to 4:00 p.m.; Sat., 9 a.m. to 4:30 p.m.; closed on Sun.

The society's Main Gallery features rotating exhibits of historical and contemporary art, with works by George Caleb Bingham and Thomas Hart Benton forming the foundation of the holdings.

## Columbia College: The Sid Larson Gallery

Brown Hall, (573) 875-7517

e-mail: [bcameron@ccis.edu](mailto:bcameron@ccis.edu)

website: [www.ccis.edu/departments/arts](http://www.ccis.edu/departments/arts)

hours: Mon.–Fri., 8 a.m. to 9 p.m.; Sat. & Sun.,  
8 a.m. to 5 p.m.

Named in honor of distinguished professor emeritus of art Sidney Larson, who taught at the college from 1951–2001, the Larson Gallery hosts several exhibits a year offering displays by professional artists, students and faculty. Its annual “Paper in Particular” exhibit is a national competition featuring works “on” or “of” paper and has been in existence since 1980.

## Stephens College: Davis Art Gallery

corner of Walnut and Ripley Streets, (573) 876-7267

e-mail: [info@stephens.edu](mailto:info@stephens.edu)

website: [www.stephens.edu/news/stephensevents/finearts/](http://www.stephens.edu/news/stephensevents/finearts/)

hours: Mon.–Fri., 10 a.m. to 3 p.m. (also by appointment).

Established in 1965 by alumna Nellie Stratton Davis and her husband, the Davis Art Gallery functions as a teaching gallery. It features exhibits by professional guest artists, faculty and students and showcases some of the more than 12,000 items in Stephens College’s renowned historical costume collection.

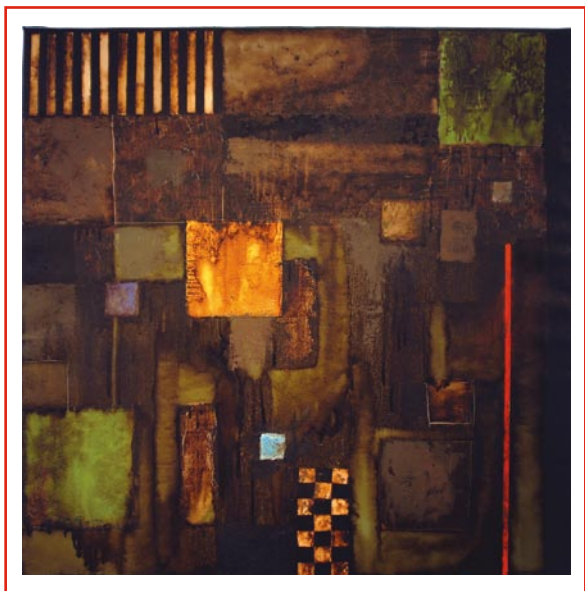


Image reprinted by permission from Joel Sager and PS:Gallery.

*Destruction of the State: Aerial View 3*, Joel Sager, 2006, collage, acrylic, tar and oil on canvas.



## *corporate collections of note*



Customers and visitors alike may enjoy the varied works shown in the “Lobby Gallery” of Boone County National Bank’s main location in downtown Columbia.

Photo reprinted by permission from Boone County National Bank.

### **Boone County National Bank**

**720 E. Broadway, (573) 874-8100**

Boone County National Bank’s collection of local, national and international art is comprised mostly of contemporary paintings, sculptures and ceramics. The main bank, located downtown, features a “Lobby Gallery” with rotating exhibits and hosts the Boone County Art Show with the Columbia Art League each September. All 16 of the bank’s branches feature original works from the corporate collection.

### **First National Bank and Trust Company**

**801 E. Broadway, (573) 449-3911**

The art collection at First National Bank & Trust Company clearly demonstrates that outstanding artwork is being produced in the heartland. While the artists featured are primarily from the Midwest, many are nationally and internationally celebrated. The collection is diverse, comprising works in various media—painting, glass, sculpture, ceramics, and fiber arts—and of varying styles and subject matter with an emphasis on contemporary ceramic works. The bank also hosts Visions, an annual photography exhibit, each September.

# in neighboring communities...



Image reprinted by permission from the Ashby-Hodge Gallery of American Art.  
©Estate of Aaron Bohrod/licensed by VAGA, New York, NY.

**Northwest Street, Aaron Bohrod (1907-1992), oil on gesso panel.**  
Permanent collection of the Ashby-Hodge Gallery of American Art.

## **Ashby-Hodge Gallery of American Art**

Central Methodist University, Fayette, MO,  
(660)248-6304

e-mail: [jgeist@centralmethodist.edu](mailto:jgeist@centralmethodist.edu)

website: [www.centralmethodist.edu](http://www.centralmethodist.edu)

hours: Tues., Wed. & Thurs., 1:30 to 4:30 p.m.; Sun. when school is in session, 1:30 to 4:30 p.m.

Located on the campus of Central Methodist University in Fayette, the Ashby-Hodge focuses on regional art. Its collection features many Midwestern artists. Several exhibits are organized each year.

## **Flavors of the Heartland/Rocheport Gallery**

201 Second Street, Rocheport, MO, (573) 698-2063

hours: Wed.–Sat., 11 a.m. to 5 p.m.; Sun., noon to 5 p.m.; Mon. & Tues. by appointment.

The Rocheport Gallery features two- and three-dimensional fine art created by regional artists. Exhibits rotate every six weeks.

# art while you eat...



Many local restaurants feature original art in their dining areas, often changing exhibiting artists regularly. Generally, the art is for sale. Though not a comprehensive list, the following restaurants are worth checking out, for their art and for their food.

## **Addison's American Grill**

709 Cherry Street  
(573) 256-1995

## **Cherry Street Artisan**

corner of Ninth and  
Cherry Streets  
111 S. Ninth Street, Suite 10  
(573) 817-3274

## **Classy's Restaurant**

1013 E. Broadway  
(573) 256-1604

## **Cucina Sorella**

22 N. Ninth Street  
(573) 443-5280

## **Kayotea**

912 E. Broadway  
(573) 442-8327

## **Lakota Coffee Company**

24 S. Ninth Street  
(573) 874-2852

## **Main Squeeze**

28 S. Ninth Street  
(573) 817-5616

## **Sophia's**

3915 S. Providence  
(573) 874-8009

## **Teller's Gallery & Bar**

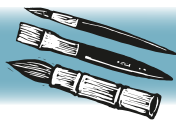
820 E. Broadway  
(573) 441-8355



Image reprinted by permission from David Spear.

Addison's American Grill and Sophia's feature a collection of paintings by local artist David Spear, a former employee of the restaurants. Many of them depict scenes or personalities from the restaurants, such as the wait staff, bartenders, cooks and dishwashers. *Servers*, David Spear, 2000, oil on canvas.

# murals of note...



SEVERAL OF COLUMBIA'S GOVERNMENT BUILDINGS house significant murals depicting the history of the city and Boone County.

## Boone County Courthouse

801 E. Walnut Street

This mural, painted in 1994 by local artist Sid Larson, depicts the evolution of the justice system in Boone County. It contains vignettes of well-known citizens James Sidney Rollins, George Caleb Bingham and freed slave John B. Lange, a successful entrepreneur. It also illustrates the stand by citizens called "Tigers" against guerilla forces during the Civil War. A second-floor mural, also by Larson, shows citizens gathering for church services and community activities in the new courthouse.

## The Guitar Building

28 N. Eighth Street

Local artist Sid Larson created these paintings in 1989. The panels depict a social history of Columbia and Boone County from the mid-1830s to the early 1900s. Among the notables included in the murals are renowned artist George Caleb Bingham; James Sidney Rollins, "father" of the University of Missouri; John H. Lathrop, first president of MU; Civil War General Odon Guitar; and postmistress Ann Hawkins Gentry. One panel shows pack trains loaded with furs on their way to St. Louis, illustrating the importance of Columbia's location on the Boone's Lick Trail, which made the town a major link to the Santa Fe and Oregon Trails in the 19<sup>th</sup> century.

## Howard Building, Municipal Court Room

600 E. Broadway

The 12 panels featured in the courtroom were painted from 1934 to 1938 by University of Missouri art professor Dr. Kenneth Hudson. Each panel represents an event of interest in the development of Columbia as a city. Subjects depicted include early settlers, wagon trains, Columbia's colleges and the University of Missouri, Missouri River commerce, the railroad from Centralia to Columbia, pit coal mining and farming. Panels include period representations such as a Model T Ford and a 1930s street scene of downtown Columbia.

*"A good picture is equivalent  
to a good deed."*

—Vincent Van Gogh, artist

# public art...



Photo reprinted by permission of The District.

A favorite of visitors to the Boone County Courthouse Square is *Jamboree*, a bronze sculpture completed in 1996 by artists Jim Calvin and Andy Davis. It is one of many publicly accessible works of art in Columbia.

**COLUMBIA'S MANY SCULPTURES** are an outdoor museum accessible to everyone. No special outing must be planned to enjoy this museum—it is open every day, has endless hours and charges no admission fee. For a free brochure that details a self-guided walking or driving tour of more than 25 publicly accessible works of art in Columbia, go to [www.GoColumbiaMo.com](http://www.GoColumbiaMo.com) (GoWord: GoPublicArt) or contact the City of Columbia Office of Cultural Affairs (OCA): (573) 874-6386 or [oca@GoColumbiaMo.com](mailto:oca@GoColumbiaMo.com). The guide is also available at City Hall, 701 E. Broadway, and at the Convention and Visitors Bureau (CVB), 300 S. Providence Road.

## art on the Web...



### Artists' Registry

(573) 874-6386

e-mail: [oca@ColumbiaMo.com](mailto:oca@ColumbiaMo.com)

website: [www.OCAregistry.com](http://www.OCAregistry.com)

This online database of individuals, groups and organizations working in dance, literary art, music, theater and visual art is coordinated by the City of Columbia Office of Cultural Affairs as part of an effort to connect working artists with potential patrons. For more information, visit [www.OCAregistry.com](http://www.OCAregistry.com), e-mail [oca@GoColumbiaMo.com](mailto:oca@GoColumbiaMo.com) or call (573) 874-6386.

## Arts Express Newsletter

(573) 874-6386

e-mail: [ArtsExpress@GoColumbiaMo.com](mailto:ArtsExpress@GoColumbiaMo.com)

website: [www.GoColumbiaMo.com](http://www.GoColumbiaMo.com) (GoWord: GoArtsExpress)

Arts Express appears bimonthly with listings of music, dance, theater, literary arts and visual arts opportunities. A special section includes offerings just for kids. The free newsletter is available through the City of Columbia Office of Cultural Affairs or online at [www.GoColumbiaMo.com](http://www.GoColumbiaMo.com) (GoWord: GoArtsExpress).

## Columbia Galleries

website: [www.ColumbiaGalleries.com](http://www.ColumbiaGalleries.com)

A service of the Columbia Convention and Visitors Bureau (CVB), the site features basic information about most local art galleries and links to their websites. **For more information, go online or call the CVB at (573) 875-1231.**



*but wait,  
there's more...*

Two projects underway at press time follow. Once completed, both will be significant opportunities for artists and arts enthusiasts alike.

## Orr Street Studios

104 Orr Street

website: [www.OrrStreetStudios.com](http://www.OrrStreetStudios.com)

The Orr Street Studios will feature 16 rental studios for artists to use for the creation, exhibition and sale of their work. Expected to be operational in late 2006, Orr Street Studios will include a café, outdoor courtyards, an exhibit gallery and meeting hall. Visitors may enjoy attending presentations, classes, exhibits and open-studio events where they can interact with artists and see artwork in progress.

## The Warehouse Studios

1107 Hinkson Avenue, (573) 875-8950

e-mail: [info@thewarehousestudios.com](mailto:info@thewarehousestudios.com)

website: [www.thewearehousestudios.com](http://www.thewearehousestudios.com)

Plans include the renovation of the historic Diggs Building into a live-work space for artists. The project calls for artist's lofts and studios, professional offices, a performance space and a gallery with later additions of an arts-and-crafts supply store and a coffee shop. Organizers hope to be operational sometime in 2007.



Image reprinted by permission from Scott Myers and the City of Columbia.

This mural depicts the building of the “Old Plank Road,” 10 miles of wooden planks that linked Providence at the Missouri River to Columbia. It is one of 12 murals in the municipal courtroom of the city’s Howard Municipal Building painted by artist Kenneth Hudson in the 1930s to depict the history of the area.

**Completed 2006.**

**Text & Project Coordination:**

**Marie Nau Hunter with assistance from Kay McCarthy;**

**Design: Jan Wiese-Fales, Fertile Mind;**

**Editing: Marta Ferguson, Wordhound Writing**

**& Editing Services, LLC.**



City of Columbia  
Office of Cultural Affairs  
P.O. Box 6015  
Columbia, MO 65205

*Return Service Requested*